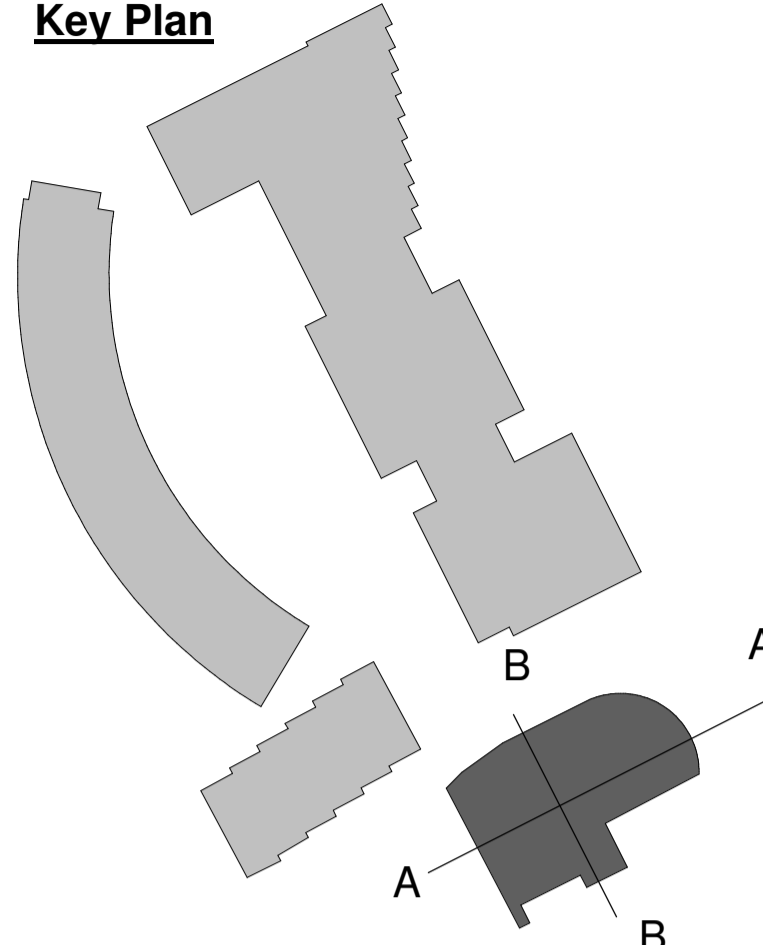


Notes
 Do not scale from this document, unless for the purposes of planning applications where a scale bar is provided. Refer to figured dimensions only. All dimensions to be verified on site prior to construction. Report all discrepancies or ambiguities to the Document Originator immediately. This document is to be read in conjunction with relevant documents, drawings and standards.

Key Plan

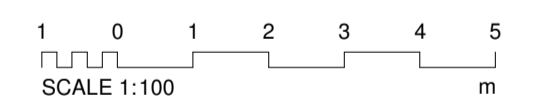


Proposed Materials

- 01 Curtain Wall Glazing - Dark Grey Stick System with Expressed Vertical Mullions & Matching Casework
- 02 Purbeck Stone Wall - Mixed Size and Colour Rubble Walling
- 03 Light Grey Cast Stone Lintel
- 04 Vertical Shiplap Grey Timber Cladding
- 05 Shiplap Grey Timber Cladding to Soffit
- 06 Dark Grey Aluminium Doors and Windows
- 07 Green Wall
- 08 Extensive Green Roof
- 09 Mansafe System
- 10 Stone Paving
- 11 Tiled finish to pool with perimeter slot drain
- 12 Dark Grey Render
- 13 Roof access hatch
- 14 Aluminium louvre as part of curtain wall system
- 15 Aluminium louvre to soffit
- 16 Hi & miss timber screen

P02 10/10/22 ISSUED FOR PLANNING GCT MAS

Rev	Date	Notes	Dm	Chkd



Document Originator



London 106 Weston Street, SE1 3QB 020 7160 6000
 Plymouth East Quay House, PL4 9HX 01752 261 282
 Bristol pivot + mark, 48-52 Baldwin Street, BS1 1QB 0117 923 2535
 RIBA Chartered Practice www.aww-uk.com

Client
 Kingfisher Resorts Studland Ltd

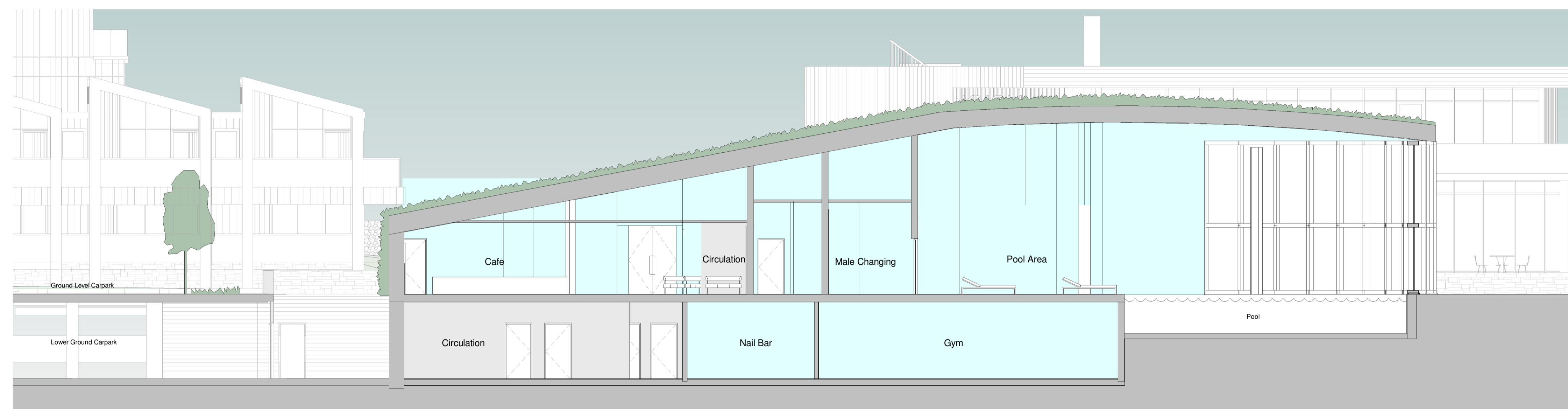
AWW Project Number 4561 Project Stage STAGE 2

Project Title
 Knoll House Hotel Studland

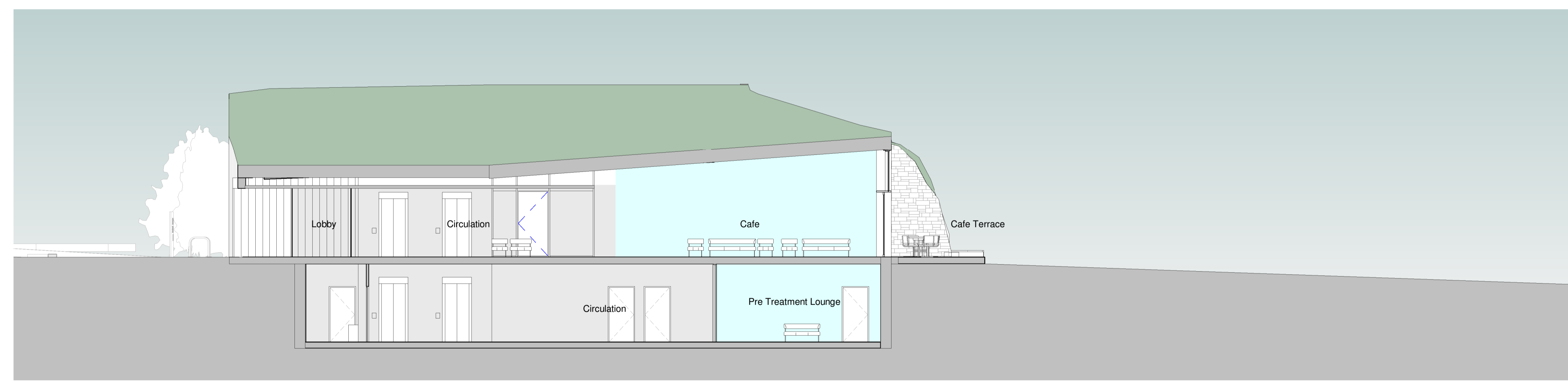
Title
 Spa - Proposed Sections

Scale @ A1 Document Status

As Indicated	Project	Origin	Volume	Level	Type	Role	Number	Rev
As Indicated	4561	AWW	T2	ZZ	DR	A	30001	P02



Section AA
 1 : 100



Section BB
 1 : 100